

### Market Trades

#### IRS Outright

Tenor	Closing	△▼(bp)	Trade Level
1y	1.8675	0.00	1.8675
1.5y	1.8400	0.25	1.8375 - 1.84
2y	1.8125	0.75	1.805 - 1.8125
4y	1.7700	1.25	1.7575 - 1.77

CCP(건)	금액(억)	전일비
97	26,350	-20,556

#### IRS Spread & CRS

Tenor	Closing	△▼(bp)	Trade Level
4*5y	-0.50	0.25	-05
7*10	4.50	0.25	4.75

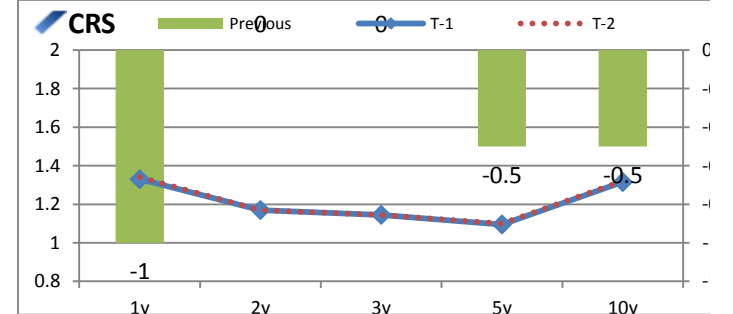
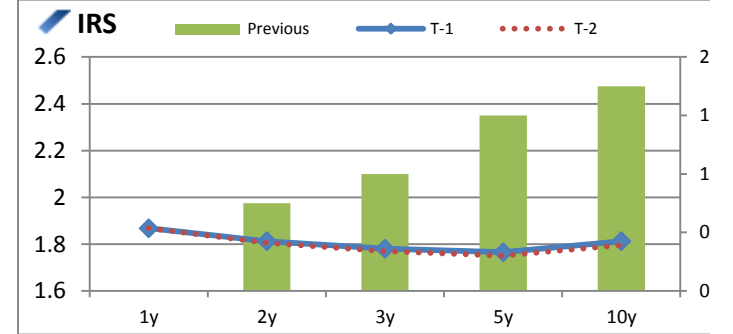
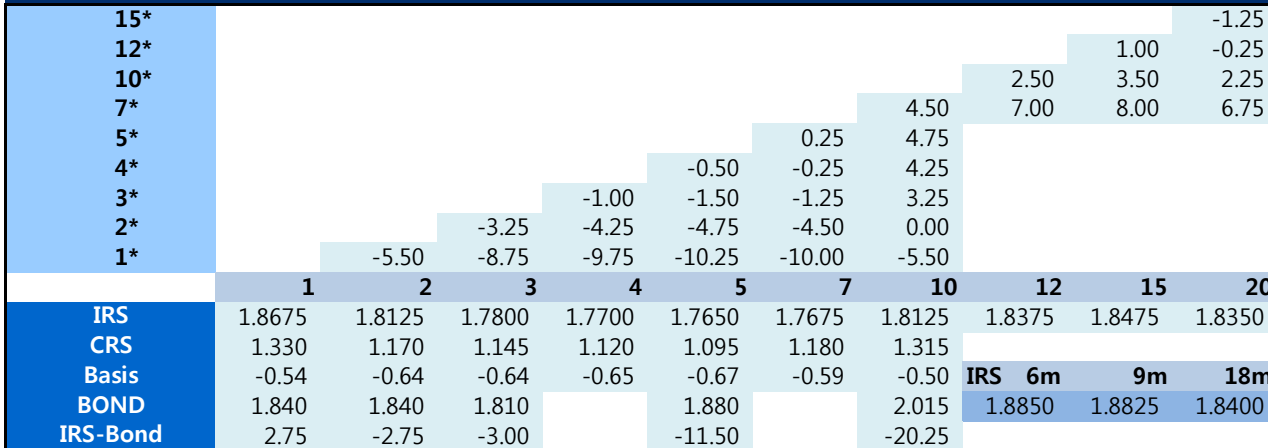
  

CRS

#### Market Summary

	Closing	△▼
KOSPI	2,228.66	-1.1
USD/KRW	1,125.20	1.7
KTB F 3Y	109.20	-0.0
KTB F 10Y	126.80	-0.2
CD(91d)	1.89	0.0
CALL	1.74	-0.0
Swap Point(1m)	-0.85	0.0
DOW	25,954.44	63.1
US T-Note(2y)	1.7400	0.00
US T-Note(10y)	2.6429	0.00
EUR/USD	1.1340	0.00
WTI	56.92	0.8
GOLD	1,343.30	1.0

### Chart



#### Bond-Swap Spread Chart

