

## Market Trades

### IRS Outright

Tenor	Closing	Δ▼(bp)	Trade Level
2y	1.7975	0.25	1.795 - 1.7975
3y	1.7750	0.50	1.77 - 1.775
5y	1.7750	1.00	1.765 - 1.775

CCP(건)	금액(억)	전일비
57	18,608	-3,811

### IRS Spread & CRS

Tenor	Closing	Δ▼(bp)	Trade Level
10*15y	4.00	0.00	4
10*20y	0.25	0.25	0.25

CRS

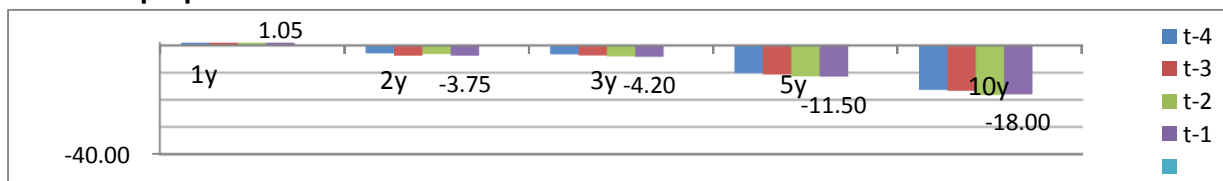
### Market Summary

	Closing	Δ▼
KOSPI	2,177.30	-0.4
USD/KRW	1,117.70	-3.6
KTB F 3Y	109.25	-0.0
KTB F 10Y	126.74	-0.1
CD(91d)	1.86	0.0
CALL	1.79	0.0
Swap Point(1m)	-1.00	0.0
DOW	24,737.20	183.3
US T-Note(2y)	1.7900	0.03
US T-Note(10y)	2.7589	0.04
EUR/USD	1.1415	0.01
WTI	53.69	0.5
GOLD	1,297.40	18.3

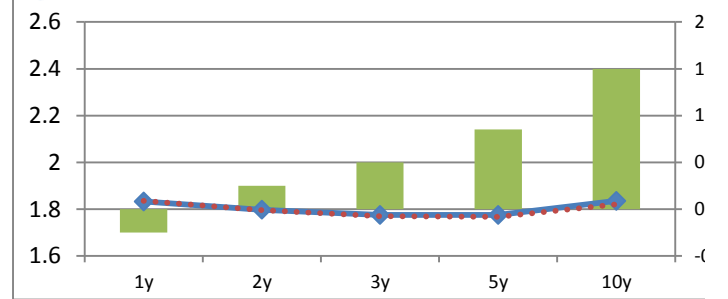
## Chart

	1	2	3	4	5	7	10	12	15	20
15*										-3.75
12*									1.25	-2.50
10*							2.75	4.00	0.25	
7*						5.00	7.75	9.00	5.25	
5*					1.00	6.00				
4*				0.50	1.50	6.50				
3*			-0.50	0.00	1.00	6.00				
2*		-2.25	-2.75	-2.25	-1.25	3.75				
1*	-3.50	-5.75	-6.25	-5.75	-4.75	0.25				
IRS	1.8325	1.7975	1.7750	1.7700	1.7750	1.7850	1.8350	1.8625	1.8750	1.8375
CRS	1.375	1.230	1.205	1.195	1.185	1.260	1.395			
Basis	-0.46	-0.57	-0.57	-0.58	-0.59	-0.53	-0.44	IRS 6m	9m	18m
BOND	1.822	1.835	1.817		1.890		2.015	1.8525	1.8475	1.8200
IRS-Bond	1.05	-3.75	-4.20		-11.50		-18.00			

### Bond-Swap Spread Chart



### IRS



### CRS

