

## Market Trades

### IRS Outright

Tenor	Closing	△▼(bp)	Trade Level
1y	1.8350	0.50	1.83 - 1.835
2y	1.7975	0.50	1.7925 - 1.7975
3y	1.7750	0.75	1.7675 - 1.7750
4y	1.7700	0.50	1.765 - 1.77
5y	1.7700	0.50	1.765 - 1.77

CCP(건)	금액(억)	전일비
56	15,005	-18,189

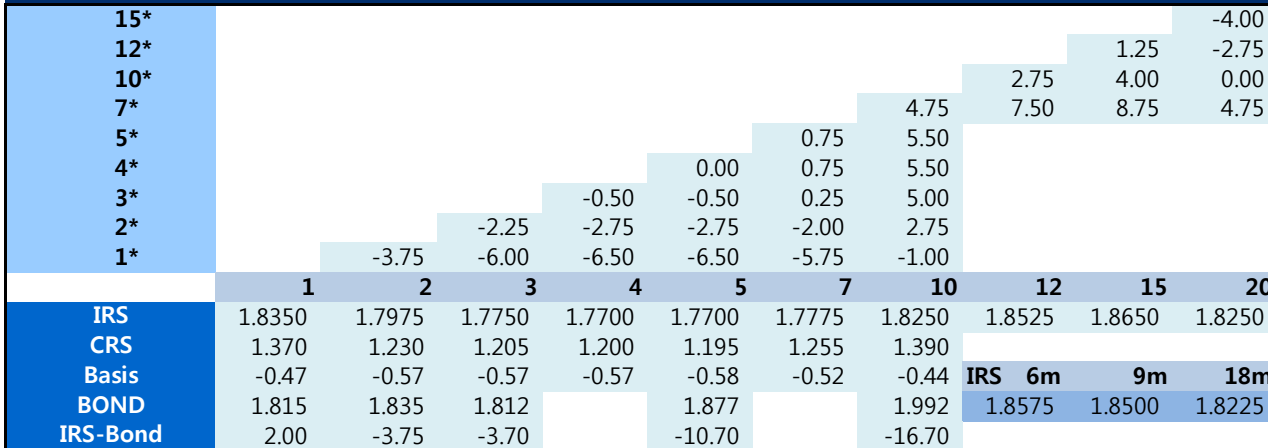
### IRS Spread & CRS

Tenor	Closing	△▼(bp)	Trade Level
CRS			

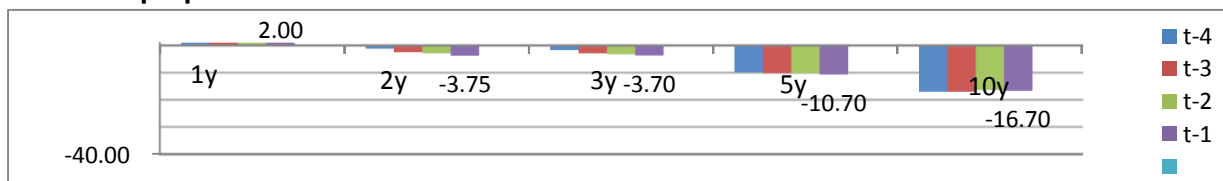
### Market Summary

	Closing	△▼
KOSPI	2,145.03	17.2
USD/KRW	1,128.60	1.3
KTB F 3Y	109.26	-0.0
KTB F 10Y	127.00	-0.0
CD(91d)	1.86	0.0
CALL	1.75	-0.0
Swap Point(1m)	-1.00	0.0
DOW	24,575.62	171.1
US T-Note(2y)	1.7500	-0.00
US T-Note(10y)	2.7441	0.00
EUR/USD	1.1383	0.00
WTI	52.33	-0.4
GOLD	1,283.10	0.6

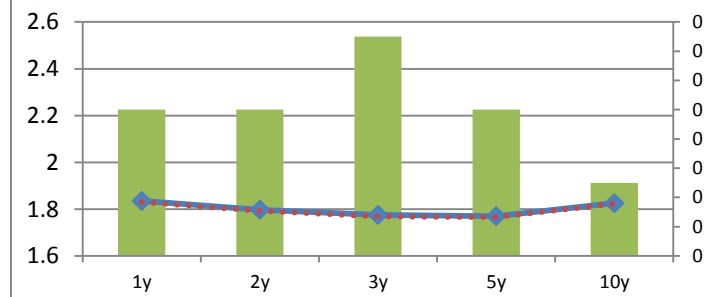
## Chart



### Bond-Swap Spread Chart



### IRS



### CRS



